

do _ co _ mo _ mo _

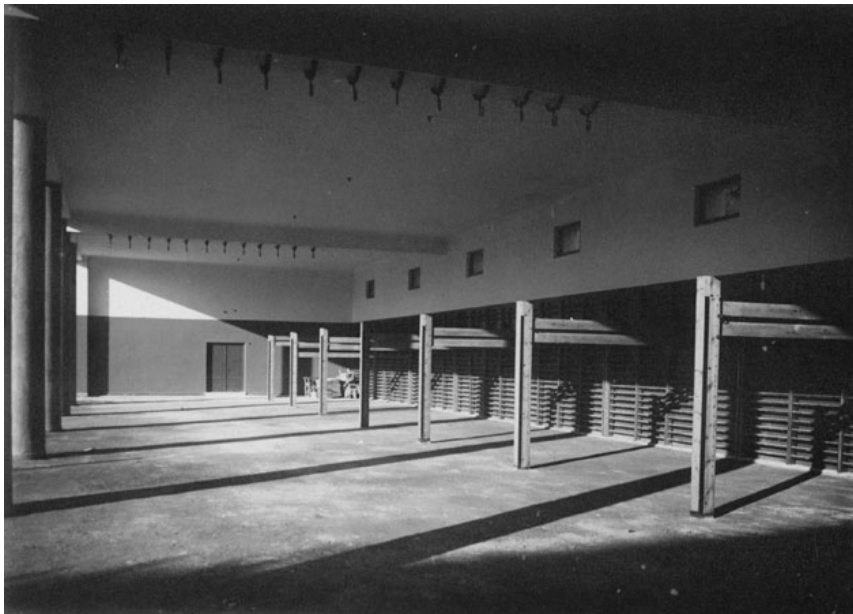
Minimum Documentation Fiche 2003

composed by national/regional working party of: Greece

International working party for
documentation and conservation

of buildings, sites and neighbourhoods of the
modern movement

0.1 Picture of building/site



depicted item: Gym of the 15th Elementary School (formerly Marasleion)
source: Neohellenic Architectural Archives, Benaki Museum
date: 1930s

1. Identity of building/group of buildings/urban scheme/landscape/garden

- 1.1 current name of building
15th Elementary School
- 1.2 variant or former name
Marasleion School

db
code

3

4

do _ co _ mo _ mo _

ISC/R members update 2003

for office use only

International working party for
documentation and conservation
of buildings, sites and neighbourhoods of the
modern movement

1.3	number & name of street 4 Marasli	5
1.4	Town Athens	6
1.5	Province/state Attiki Prefecture	7
1.6	zip code 106 76	8
1.7	Country Greece	9
1.8	national grid reference	10
1.9	classification/typology EDC	11
1.10	protection status & date	12
2	History of building	
2.1	original brief/purpose Gym for the Marasleion school	13
2.2	dates: commission/completion 1930 / 1935 (c)	14
2.3	Architectural and other designers Nikolaos Mitsakis	15
2.4	others associated with building N. Mitsakis, head of Projects Bureau, Ministry of Education; Th. Michalopoulos, director of Projects Bureau, Ministry of Education	16
2.5	significant alterations with dates Originally open, the front part of the structure has been closed by a brick wall with glass blocks in the decades 1950-60 (c)	17
2.6	current use classroom	18
2.7	current condition fair	19
3	Description	
	general description This structure belongs to a complex of three distinct buildings overlooking the school's courtyard: an assembly hall, a handicrafts lab, and a gym with sanitary facilities for the courtyard. The lab and the gym replaced formerly built structures. This complex was added to the older building of the Educational Academy of Athens as an experimental 6-classrooms and a single-classroom school. All these additions, placed in a line, are located on the edge of the site, with a SW orientation. In this manner, a protected courtyard for recesses was created between the Educational Academy	20

d o _ c o _ m o _ m o _

ISC/R members update 2003

for office use only

International working party for
documentation and conservation
of buildings, sites and neighbourhoods of the
modern movement

building and the new assembly hall. At the N side of the court, and next to the school's garden, a small, shallow pool was added for the recreation of the students. On the corner of the site and on a level 3 m. Above the level of the street (Diamanti Patera str., formerly Alopekis str.), is located the gym; an open space 16X34 m. In size extends before it.

- 3.2 Construction 21
 Post and beam system in concrete
 Context
- 3.3 The structure was integrated to the urban tissue of the city, within the boundaries of the existing plot of the school 22

4 Evaluation

- 4.1 Technical 23
 Social
 This complex belongs to the group of schoolbuildings in Greece from the '30s; probably it was one of the earliest projects in the program. This was the third organized effort at a large scale to build school buildings (the first was in the Kapodistrias period 1828-1831, the second comprised the schools designed by D. Kallias 1894-1910). The sanitary facilities included in the gym were originally also geared to the needs of neighboring refugee camps (formed in the aftermath of population exchange with Turkey after 1922). The schools built in the '30s probably were the most mature expression of the modern movement in Greece; they spearheaded the inclusion of Greek works of architecture in foreign publications and helped create an interest in Greece. 24
- 4.2 Cultural & Aesthetic
 It is a significant work by N. Mitsakis. In it one can perceive the search for an integration of the classicist and traditional background of Greek architecture with the modern idiom. This particular project demonstrates a clearcut, spare and balanced form. 25
- 4.3 Historical
 This is the last time that the architect uses classicist references to a school project. Subsequently, school gyms would always use the post and beam system with a marked simplicity. 26
- 4.4 general assessment
- 4.5 This work depicts the architect's accomplishment at expressing models derived from the past in modern terms 27

5 Documentation

- principal references
 Patroklos Karantinos, ed., *Ta Nea Scholika Ktiria*, Athens, Technical Chamber of Greece, 1938.
 Francois Loyer, *Architecture de la Grèce contemporaine*, doctoral thesis, 3me cycle, Université de Paris, Faculté des Lettres et Sciences Humaines, 1966.
- 5.1 Dimitri Philippides, *Neoelliniki Architektoniki*, Athens, Melissa, 1984. 28
 Andreas Giacumacatos, Ezio Godoli, *L'architettura delle scuole e il Razionalismo in Grecia*, Firenze, Modulo, 1985.
 Christos Panousakis, *Nikolaos Mitsakis 1899-1941*, Athens, Documentation Center of Modern Greek Architecture – Benaki Museum, 1999.
 Savas Condaratos, Wilfried Wang, eds., *20th century architecture, Greece*, Deutsches Architektur

do _ co _ mo _ mo _

ISC/R members update 2003

for office use only

International working party for
documentation and conservation
 of buildings, sites and neighbourhoods of the
modern movement

Museum – Hellenic Institute of Architecture, Prestel, Munich, 1999.

- 5.2 visual material attached 29
2 photos : the Gym and the courtyard with the pool
- 5.3 rapporteur/date 30
Maro Kardamitsi-Adami, June 2003

6. Fiche report examination by ISC/R

name of examining ISC member:

date of examination:

approval:

Wp/ref. no:

NAI ref. no:

comments:



do _ co _ mo _ mo _

ISC/R members update 2003

for office use only

International working party for
documentation and conservation
of buildings, sites and neighbourhoods of the
modern movement